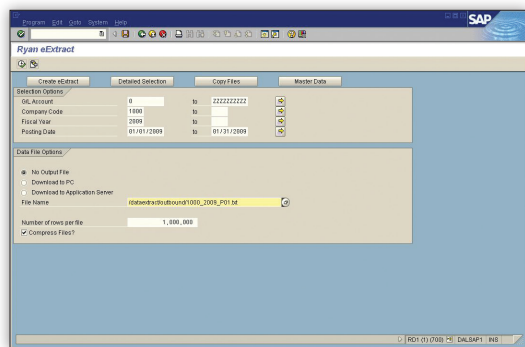


Innovative Data Extraction Technology

Retrieving data from your SAP® system for use in a review and audit can be time consuming, complicated, and risky. Ryan eExtract® offers a customized, advanced business application programming solution that provides simplified SAP® data extraction, enabling the quick and efficient selection and retrieval of SAP® documents while substantially mitigating the risk of missing transactions while creating a delimited text file that easily reconciles to general ledger balances.

Standard SAP® transaction processing often utilizes clearing accounts. On a goods receipt document, the expense account is debited, and the clearing account is credited. On invoice entry, the clearing account is debited, and the accounts payable (AP) control account is credited. As a result, the expensing of the goods does not occur at the time of invoice entry, so the general ledger expense account is not directly linked to the invoice receipt.

Ryan eExtract® includes all information on one line by utilizing several “corresponding” fields. These fields are intended to capture the corresponding goods receipt information for each invoice, including the general ledger expense account, mitigating risk and providing a more reliable process than the SAP® table download.



Ryan eExtract® provides a centralized portal for extracting data and generating queries and reports as well as a sophisticated utility for transferring files between the SAP® service application to the SAP® client machine.

The Ryan eExtract® application has four main functions:

- Create eExtract** *Mass data extraction*
- Detailed Selection** *Ad-Hoc querying and reporting*
- Copy Files** *Data transferring*
- Master Data** *Master SAP® data extraction support*

Benefits of Ryan eExtract®

Simplified Data Extraction

Gain full access to financial transactions containing relevant information for a traditional or reverse audit. Purchase order, invoice, tax, and payment information are included to minimize additional data requests from auditors.

SAP® Integration

The Ryan eExtract® application works with SAP® versions R/3 3.1, R/3 4.6, R/3 4.7, ECC 5.0, and ECC 6.0. Modifications to the standard code can be made, enabling the program to work with other SAP® versions and/or archived data.

Detailed Reporting

Ryan eExtract® produces an audit report that includes all information on one line by utilizing several corresponding fields, as opposed to standard SAP® transaction processing that often utilizes clearing accounts. These fields capture the corresponding goods receipt information for each invoice, including the general ledger expense account.



“Ryan has provided BASF outstanding value by recovering overpaid taxes while identifying and implementing tax automation solutions, streamlining tax decision processes, and integrating industry-leading tax software to improve our tax performance.”

Frederick W. Jenkin
Manager, Sales & Use Tax Audits
& Special Projects



For additional information, please call 800.545.1856 or visit us at www.ryan.com.